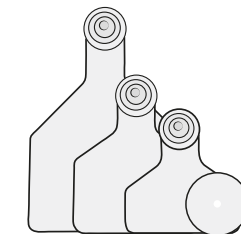
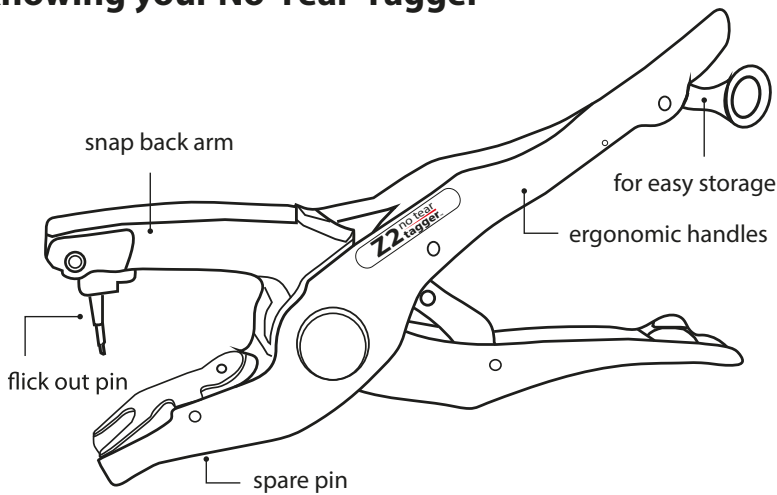


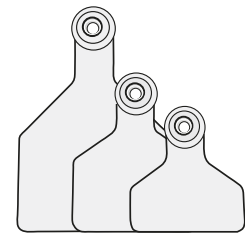
FOLLOW THESE STEPS WHEN APPLYING

Z TAGS TWO PIECE TAGS

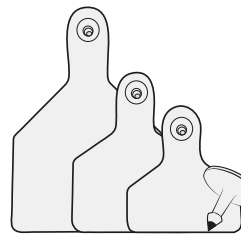
Knowing your No-Tear-Tagger



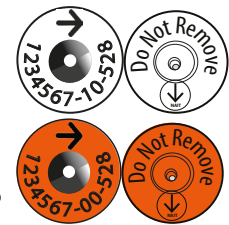
Two Piece Tags
Female Tamperproof



Two Piece Tags
Female Non-Tamperproof

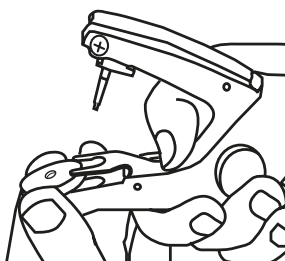


Two Piece Tags
Male tags

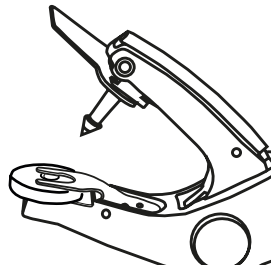


Z2 no tear tags™
NAIT approved RFID tags

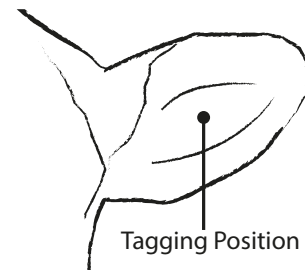
Applying Z TAGS TWO PIECE TAGS



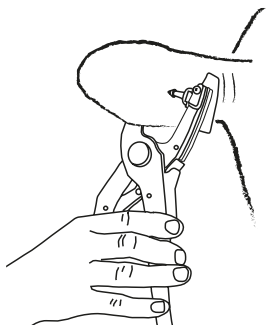
1 Depress the metal clamp holder and place the female tag under the clamp.



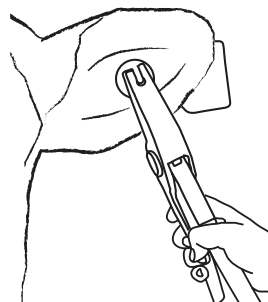
2 Push the male tag fully onto the tagger pin.



3 Position the tag between the two main cartilages, approximately halfway between the animal's head and the tip of the ear.



Male tag entering from the back of the animal's ear.



Front of the animal's ear with female tag.

4 ALWAYS APPLY THE MALE TAG IN THE BACK OF THE EAR.

Squeeze handles firmly and hold closed. When the tags have locked together, the tagger arm flicks back and releases the tag preventing ripped ears.

To remove the tagger, pull straight down from animal's ear in one smooth motion - no need to open the handles.

0800 55 33 11 • service.nz@ztags.com • www.ztags.com